

# SMOKE-LESS FIRE PITS



**breeo**  
rethinking fire





ablaze  
fire it up.



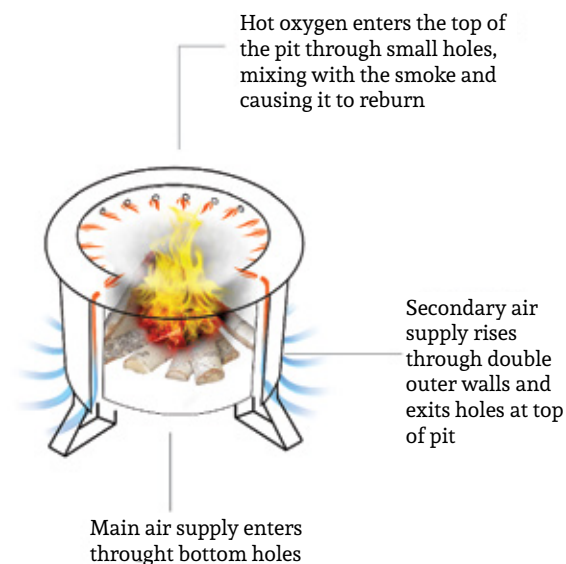
The Ablaze brand is all about the rugged outdoor lifestyle. Built with heavy steel, this fire pit is designed to last for years. However, it is also portable, which allows for easy transportation to the cabin or Campsite. The Ablaze brand is the original smoke-less fire pit designed by Breeo. Ablaze won the 2014 Vesta Awards with Hearth & Home Magazine!

# About us

Since our founding in 2011, all we have ever done at Breeo is build smoke-reducing fire pits. The goal of bringing the smoke-less fire experience to homes across the country has inspired us since the beginning. Our tagline is Rethinking Fire, and it is at the core of who we are. Hand-built by our craftsman in our shop in Lancaster, PA, each individual unit is cut, shaped, welded and polished in America. We would love to revolutionize your campfire experience!



Does it work?  
Check us out on Facebook  
@breeollc



See last page for  
cooking accessories

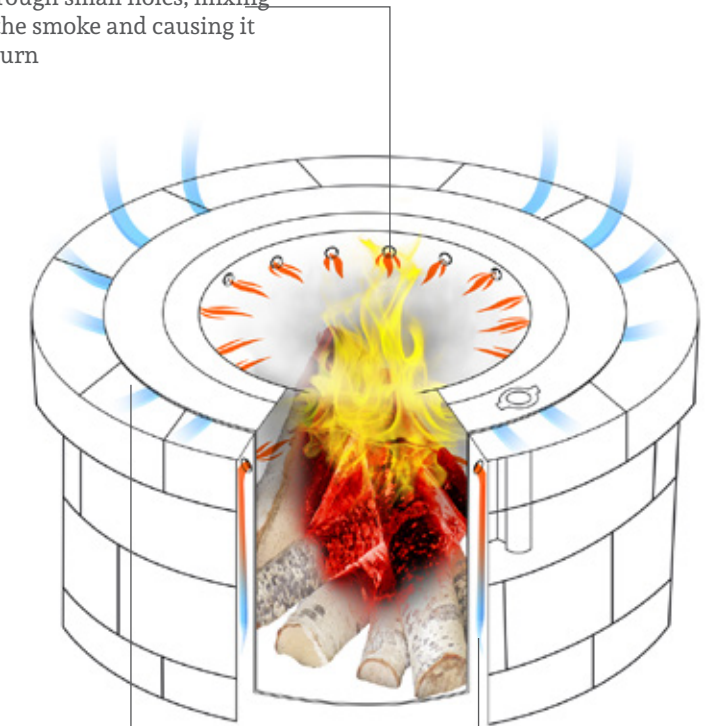
**Patented Design**





**zentro**  
gather round.

Hot oxygen enters the top of the pit through small holes, mixing with the smoke and causing it to reburn



Main air supply enters between the stone and metal ring

Secondary air supply rises through double outer walls and exits holes at top of pit

There's nothing like relaxing around a fire ring to bring family and friends closer together. But with ordinary fire rings, smoke always blows in someone's face—usually yours. With Zentro™ stinging eyes are a thing of the past. Zentro's patent-pending technology reburns smoke before it gets anywhere near your eyes. Say hello to good times and good-bye to smoke.

# smart.

Zentro™ nearly eliminates annoying smoke for playing guitar or swapping stories. And Zentro™ works with new or existing fire rings, fitting inside diameters from 30" – 41".

All Zentro fire pits also available in 28" & 32". See last page for dimensions & cooking accessorie



**ZO-24SLFP**  
Zentro 24" Smoke Less Fire Pit with Lid  
- 24" Inside Diameter  
- Weight 104 lbs.  
- Fits Into 30" - 33" Inside Diameter



**ZO-24SLFP-SS**  
Zentro 24" Smoke Less Fire Pit with Lid - Stainless Steel  
- 24" Inside Diameter  
- Weight 104 lbs.  
- Fits Into 30" - 33" Inside Diameter



**ZO-24SLFP-SQ**  
24" Square Zentro Fire Pit  
- 24" Inside Diameter  
- Weight 120 pounds  
- Fits Into 30" - 33 1/2" Inside Diameter



**ZO-24SLFP-SQ-SS**  
24" Square Zentro Fire Pit - Stainless Steel - 24" Inside Diameter  
- Weight 120 pounds  
- Fits Into 30" - 33" Inside Diameter





The Double Flame Fire Pit requires zero assembly. Pull it out of the box, and light a fire. It's extremely portable, making it easy to haul along on your next camping trip. Perhaps it's time to impress your friends by bringing it to their house next time you have a party! The grilling feature of the Double Flame Fire Pit is completely adjustable and easy to use. Simply slide the post into the sleeve, slip in the pin, and viola! Your fire pit is ready to cook. Adjust the height of the grill to cook depending on the amount of heat desired.



19"STAINLESS

24"STAINLESS

24"BLACK

See last page for cooking accessories and dimensions





The Luxeve Fire Pit is designed to be a beautiful outdoor fire accent to create a warm and inviting atmosphere in an upscale patio space.

Using Breco's smoke-less technology, Luxeve takes it to a new level with a feeling of class.

A powder-coated exterior available in multiple colors, stainless modern feet, and fire pit glass around the rim gives Luxeve contrast and style.

We at Breco believe that design and aesthetics can be applied to a wood fire pit, to make it a natural accent in the most luxurious of patio spaces.

Using the Luxeve Fire Pit as a substitution for gas fire pits has many economic, environmental, and even social benefits

Choose your favorite decorative fire pit glass to go around the top rim of the fire pit

Fuel Type: Wood  
Material: Triple walled, stainless steel  
Exterior Finish: Powder Coating  
Interior: 304 Stainless

Dimensions:  
33" outside diameter  
15" total height  
unit sits 3" off ground

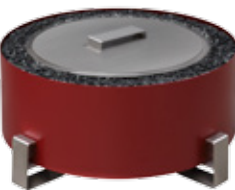
12" inside pit height  
24" inside pit diameter  
25" outside pit diameter

Steel Thickness:  
16 gauge outside ring  
16 gauge lid  
16 gauge shell

1/8" thick top ring of pit  
1/8" thick bottom  
legs are 1/8" x3" wide flat  
lid handle is 1/8" x3" wide flat



Stainless Steel



Red



Earth Rust



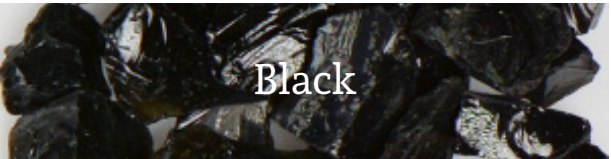
Bronze Vein



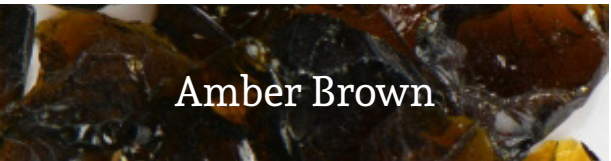
Silver Vein



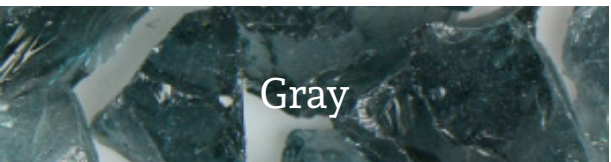
White River



Black



Amber Brown



Gray



Crystal Clear



Dark Blue



<div><p><b>24" Zentro ZO-24SLFP</b> - 24" Inside Diameter - 104 LBS Fits into 30-33" ID</p></div> <div><p><b>28" Zentro ZO-28SLFP*</b> - 28" ID - 118 LBS Fits into 34-37" ID</p></div> <div><p><b>32" Zentro ZO-32SLFP*</b> - 32" ID - 125 LBS Fits into 38-41" ID</p></div> <div><p>Steel-Painted Black</p><p>Fire Pit Depth 12"</p></div>	<div><p><b>24" Zentro Square ZO-24SLFP-SQ*</b> - 24" Inside Diameter - 120 LBS Fits into 30-33" ID</p></div> <div><p><b>28" Zentro Square ZO-28SLFP-SQ*</b> - 28" ID - 135 LBS Fits into 34-37" ID</p></div> <div><p><b>32" Zentro Square ZO-32SLFP-SQ*</b> - 32" ID - 145 LBS Fits into 38-41" ID</p></div> <div><p>Steel-Painted Black</p><p>Fire Pit Depth 12"</p></div>
<div><p><b>24" Zentro ZO-24SLFP-SS</b> - 24" ID - 104 LBS Fits into 30-33"ID</p></div> <div><p><b>28" Zentro ZO-28SLFP-SS*</b> - 28" ID - 118 LBS Fits into 34-37" ID</p></div> <div><p><b>32" Zentro ZO-32SLFP-SS*</b> - 32" ID - 125 LBS Fits into 38-41"ID</p></div> <div><p>304 Stainless Steel</p><p>Fire Pit Depth 12"</p></div>	<div><p><b>24" Zentro Square ZO-24SLFP-SQ-SS*</b> - 24" ID - 120 LBS Fits into 30-33"ID</p></div> <div><p><b>28" Zentro Square ZO-28SLFP-SQ-SS*</b> - 28" ID - 135 LBS Fits into 34-37" ID</p></div> <div><p><b>32" Zentro Square ZO-32SLFP-SQ-SS*</b> - 32" ID - 145 LBS Fits into 38-41" ID</p></div> <div><p>304 Stainless Steel</p><p>Fire Pit Depth 12"</p></div>
<div><p><b>Zentro 29" Basic Fire Pit ZO-29BFP</b> - Steel-painted black - 29" Inside Diameter - Weight 50 lbs. - Fits Into 29" ½ - 32" ½ Inside Diameter -Fits Cooking Accessories</p></div> <div><p><b>Zentro 29" Ring Insert ZO-29RI</b> - Steel-painted black - 29" Inside Diameter - Weight 24 lbs. - Fits Into 29" ½ - 32" ½ Inside Diameter - No Accesories</p></div> <div><p><b>Zentro 29" Stainless Ring Insert ZO-29RI-SS</b> - Stainless Steel - 29" Inside Diameter - Weight 24 lbs. - Fits Into 29"½ - 32" ½ Inside Diameter - No Accesories</p></div>	<div><p><b>Cast Iron Kettle with Lid &amp; Legs</b> B-1354 - 1.25 Gallon B-1355 - 2 Gallon B-1356 - 2.25 Gallon B-1357 - 3.5 Gallon</p></div> <div><p><b>Cast Iron Kettle with Lid</b> B-1380 - 1.25 Gallon B-1381 - 1.75 Gallon B-1382 - 2.5 Gallon</p></div>

<div><p><b>24" Ablaze AB-24SLFP</b> - 24"ID 34" OD -16 1/2" H - 105 LBS -Steel-Painted Black</p></div> <div><p><b>24" Swing Away Grill AB-24GRL</b> - Weight: 18 LBS</p></div> <div><p><b>24" Griddle AB-24GRDL</b> - Weight: 24 LBS</p></div> <div><p><b>24" Chicken Rotisserie Grill AB-24CRG</b> - Weight: 24 LBS</p></div>	<div><p><b>24" Kettle Winch AB-24KW</b> Weight: 22 LBS</p></div> <div><p><b>Accessory Post with Collar AB-AP</b> - Steel-painted black - Weight: 9 LBS</p></div> <div><p><b>Cast Iron Kettle with Lid &amp; Legs</b> B-1354 - 1.25 Gallon B-1355 - 2 Gallon B-1356 - 2.25 Gallon B-1357 - 3.5 Gallon</p></div> <div><p><b>Cast Iron Kettle with Lid</b> B-1380 - 1.25 Gallon B-1381 - 1.75 Gallon B-1382 - 2.5 Gallon</p></div>
--	---

<div><p><b>19" Double Flame - DF-19SLFP-SS</b> - 304 Stainless Steel - 22" Outside Diameter - 19" ID - 42 LBS - 16" High</p></div> <div><p><b>19" Double Flame Grill - DF-19GRL</b> - 17" Cooking Area - Post Included</p></div> <div><p><b>24" Double Flame -DF-24SLFP-SS</b> - 304 Stainless Steel - 27"OD - 24" ID - 15" High - 44 LBS</p></div> <div><p><b>24" Double Flame - Black DF-24SLFP</b> - Steel-Painted Black - 27"OD - 24" ID - 15" High - 58 LBS</p></div> <div><p><b>Stainless Steel Lid</b> - DF-19LD - DF-24LD</p></div> <div><p><b>24" Double Flame Grill DF-24GRL</b> - 304 Stainless Steel - 24" Cooking area - 10 LBS</p></div>
---

Fuel Type: Wood  
Material: 304 Stainless Steel  
Exterior Finish: Powder Coating

Dimensions:  
33" outside diameter  
15" total height  
unit sits 3" off ground

12" inside pit height  
24" inside pit diameter  
35" outside pit diameter



Stainless Steel



Red



Earth Rust



Bronze  
Vein



Silver Vein



White River



Black



Amber Brown



Gray



Crystal Clear



Dark Blue

\*the larger size of this fire pit may result in less smoke reduction

- 13 LBS bag of decorative fire pit glass included with each fire pit



Breeo LLC • 5002 Lincoln Hwy. E Kinzers, PA 17535  
1-800-413-9848

**[www.BreeoLLC.com](http://www.BreeoLLC.com)**